



# Community and Regional Planning Students Partner with City of York on Housing Study

## Public Value

Conducting a housing study in a small rural town informs policy decisions, identifies housing needs, promotes affordable housing, supports economic development, aids infrastructure planning, engages the community, attracts grant opportunities, and enhances the overall quality of life. The study's insights are crucial for tailored policymaking, sustainable growth, and community resilience.

## The Situation

Cities routinely undertake housing studies to assess housing needs and identify supply-demand gaps. The City of York was in such need and became aware of an opportunity to collaborate with a professor and her students at UNL's College of Architecture. This partnership sought to afford students practical experience in examining existing gaps in York's housing landscape and present research-backed proposals to address them.

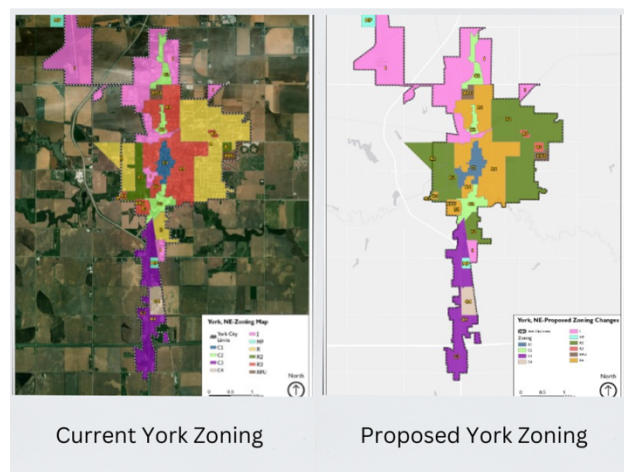
## Extension Response

Engagement is one of six key aims in UNL's N2025 Strategic Plan. In response, Extension implemented Engagement Zones across the state. This strategic move enhances Extension's capacity to engage and serve Nebraskans through strengthened collaborations with community leaders, fostering mutually beneficial initiatives with professors and students on campus. Engagement Zone Coordinators have been deployed to create opportunities to bring community leaders and university personnel together to explore possible partnerships. An event hosted in York resulted in a perfect match between the City of York and the College of Architecture.

## Impacts

The completed study has dual purpose, offering valuable insights for informed housing policy decisions and serving as a crucial baseline for the city's 2023 housing strategy. It plays a significant role in tracking

progress in subsequent years, enabling effective comparison and assessment. By providing essential data, the study contributes to bolstering the housing stock and shaping the city's long-term housing initiatives.



## Participant Feedback

*"I enjoyed working with Dr. Cochran. She brought us into her class early in the process so we could provide detailed context for the students."* Dr. Crawford. *"We are so glad to be collaborating on research that will allow more workers and families to live in the vibrant City of York!"* Dr. Cochran

## Primary Contact

Carrie L. Gottschalk, Engagement Zone Coordinator  
Nebraska Extension  
carrie.gottschalk@unl.edu

## Collaborators

Dr. Abigail Cochran, UNL College of Architecture  
Dr. Sue Crawford, York City Administrator  
Dr. Jentry Barrett, Nebraska Extension

## Extension Big 3 Alignment

- Strengthen Nebraska Agriculture & Food Systems
- Inspire Nebraskans & Their Communities
- Enhance The Health & Wellbeing of All Nebraskans